

Testing Analog Outputs

Using the 964 LINK Software

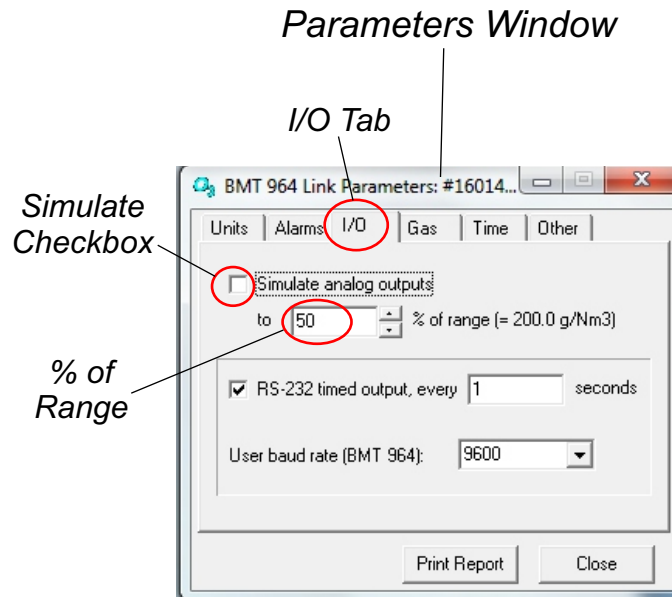


Figure 1

To test the Analog outputs (0-10Vdc and 4-20mA), select the *I/O Tab* and click the *Simulate checkbox* and the outputs will provide a simulated output based on the *% of Range* field.

Example:

As shown in Figure 1, if you click the *Simulate Checkbox*, the analog outputs would adjust to 50% of their output as follows:

0-10Vdc Output = 5 Vdc

4-20mA Output = 12mA

*After testing, un-check *Simulated Checkbox for analog outputs to return to normal operation.*